





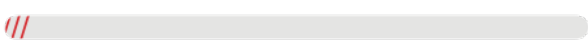


SatTRAC.mini

-  | 42 g
-  | 46.8 × 41.8 × 16.9 mm
-  | -20°C ~ +60°C
-  | Lithium mangandioxid battery, 2400 mAh



Standby Time

1 SMS Report/Day		1200 Days
1 TCP Report/Day		1000 Days
4 TCP Reports/Day		260 Days
5 Min Reporting		7 Days

The SatTRAC.mini is a micro sized tracking product supporting covert installation to monitor and protect high-value asset. It lasts for up to four years, giving it the longest battery life of any device of its size in the market.

The product is designed as a “secret weapon” for combatting vehicle theft, helping customers specializing in SVR to increase their recovery rate. It has also proved effective in various applications such as auto financing, asset monitoring, car rental and leasing and more.



Stolen Vehicle Recovery



Asset Monitoring



Car Rentals

Signal
Worldwide

Operating Band
GSM/GPRS

GPS Type
MTK GNSS Receiver

Pos. Accuracy (CEP)
Autonomous: < 2,5 m

Appearance



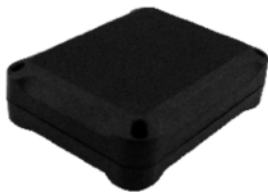
Interfaces

GSM Antenna	Internal only
GNSS Antenna	Internal only
LED Indicator	Power on

Air Interface Protocol

Command Set	@track protocol command
Transmit Protocol	TCP, UDP, SMS
Working Modes	Continuous mode and Power saving mode
Scheduled Timing Reports	Position and status reports at preset intervals
Low Power Alarm	Alarm when backup battery is low
Wakeup Report	Wake up at preset intervals

Accessories



SatTRAC.mini_IP67 Case
 Waterproof case



SatTRAC.mini Download Kit
 Upgrading and debugging Parts list: GL50 Download Jig
 Power_Supply_4.2V_US_DCJACK