



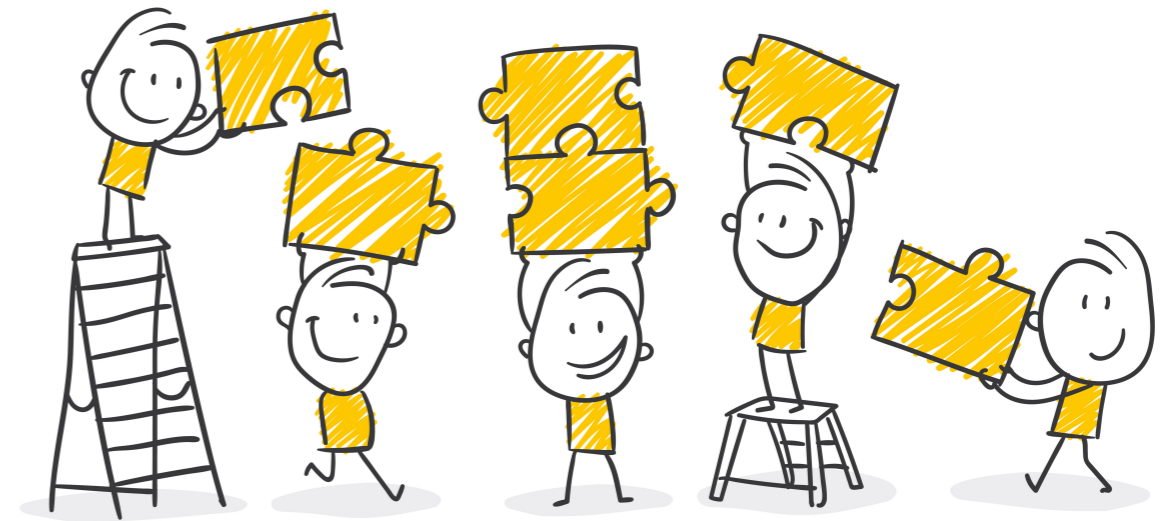
Welcome



# About us

## The company:

- Founded in 1996 in Germany
- Family business in 2nd Generation
- Regular certification (TAPA / BAT V1...)
- Development and production in Germany



## Our unique selling proposition:

We have been developing certified security location systems for years

- We offer you complete solutions for mapping, routing and communication - all from one source
  - The all-encompassing safety and security concept
  - Transport security in trucks, ships or trains
  - Person security for lone workers, employees, people in need
- We train your personnel in installation and operation
- We are always there for you - 24 hours a day / 365 days a year



# Let us analyze what you need

## Step One

To be able to offer you the best possible service and security solution, we need to analyze your situation and what you need. With our pool of experience we will be able to give you the best advice.

What would you like to protect?

A person?



Driver?

Lone worker?

A truck?



Locate it?

High Value Transport?

Your Cargo?



Swap Body?

Container?



# Mobile Security Systems for Lone Workers

## Intelligent GPS Trackers with an Alarm Function



### Why?

When you are out of earshot and sight of other people, accidents, health incidents, or even muggings can go unnoticed. That's where an emergency call device can save lives.

### Who?

- The truck driver, courier, etc.
- The employee in the warehouse
- The security personnel or gatekeeper

### How?

- Large SOS button for emergency call
- Fall detection and alarm in the absence of movement
- Two-way communication / voice monitoring / listen-in
- Real-time positioning via GPRS



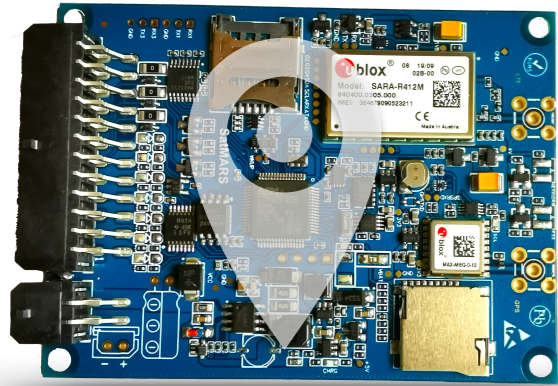
**SatMARS**

NAVIGATIONS- & KOMMUNIKATIONSSYSTEME  
INTELLIGENTE - & KOMMUNIKATIONSSYSTEME



# Securing Goods Through Intelligent Positioning Systems

Intelligent devices to protect trailer and goods



## 4G tracking devices

Intelligent tracking systems for trailers using 4G network for best connection and positioning accuracy

- Jamming-Detection, Spoofing-Detection, Various Security Logics
- Ready to use in M2M-IoT and 2G Fallback

## System solutions add up to full security system

Protection against theft of goods in the high-value sector

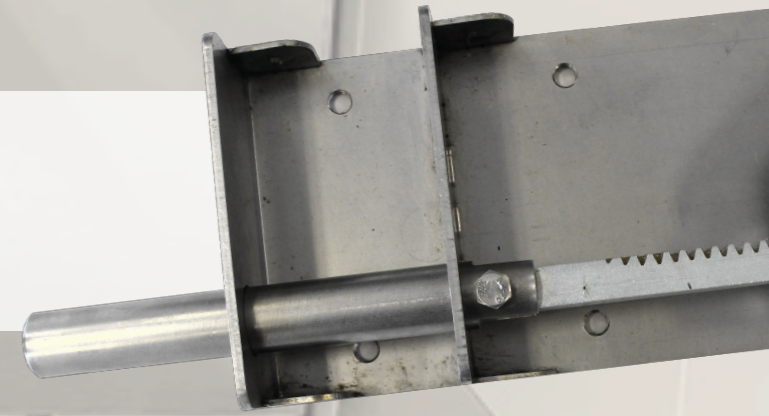
- Numerous sensors for motion detection and driver safety
- Additional frame solutions secure cargo
- Detection of cutting doors and sidewalls
- Solutions for refrigerated semitrailers (pharmaceuticals)





# SatLOCK All-In-One Cargo Security

Intelligent lock that will lock the rear door from inside



## SatLOCK.easy safe

Simple and cost-effective solution that enables fast installation with optimized safety. The intelligent SatLOCK interlock locks the rear doors automatically after they have been closed



Track your vehicle via GPS with the SatMOS® positioning system



Remotely control the electronic interlock.

Or via a built-in keypad on the vehicle by an automatically changing code.



Thrust and stroke length and position adjustable for optimal installation



NAVIGATIONS- & KOMMUNIKATIONSSYSTEME  
ИНТЕЛЛИГЕНТ- & КОММУНИКАЦИОННЫЕ СИСТЕМЫ



# SatLOCK for High Security Transports

Built-in locking solutions prevent breaking into the trailer

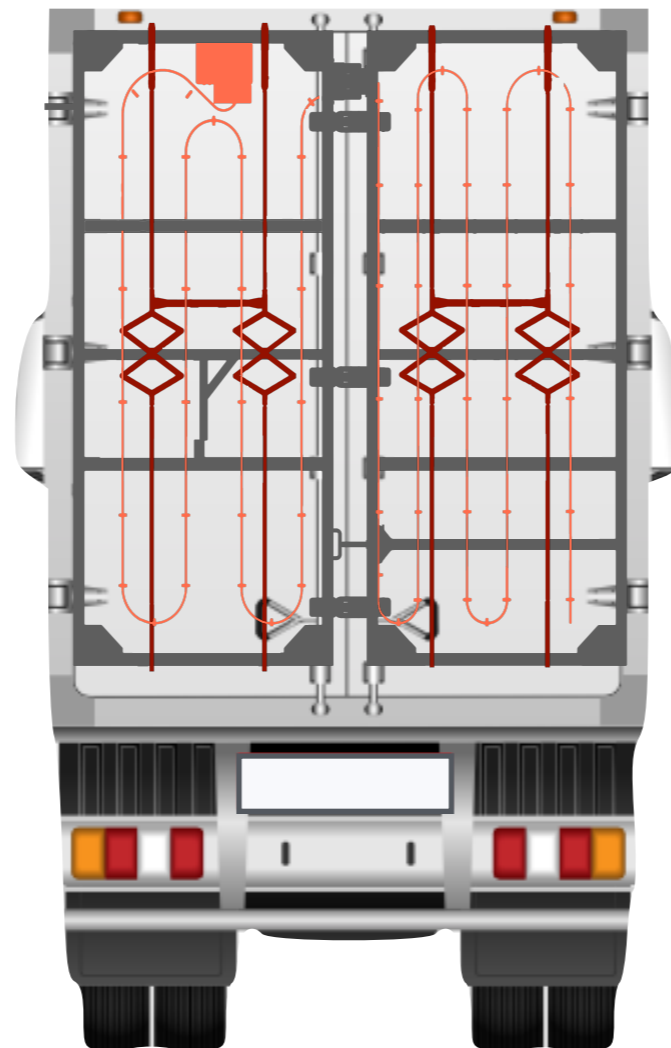


**SatLOCK.high value** - certified with TAPA TSR-1, BAT-V1

High security Lock and Frame solutions with a variety of sensors and number of locking bolts depending on the security level.

Various motion and light sensors

Loop cable inside the frame for detection of intrusion attempt through the door



A solid frame for maximum protection

One to four locking bolts depending on security level



# SatTRAC Mobile Solutions

Mobile solutions for object and cargo location



## SatTRAC.secure

The mobile location with enhanced security through sensors

- Variety of different external and internal sensors to secure cargo during transport
- Temperature detection and evaluation in the container possible
- expandability makes further adaptation to customer requirements possible



## SatTRAC.lommy

The undercover solution for container and swap body location

- Camouflaged in a ventilation cover
- Anti-theft and tracking of semi-trailers, trailers, swap bodies, containers
- Stationary monitoring, for example at interim storage facilities



## NEW: SatTRAC.lock

An intelligent and robust high security padlock

- Can be locked electronically and mechanically or by remote
- Accurate identification and precise positioning at the accuracy of 10 meters





# Service

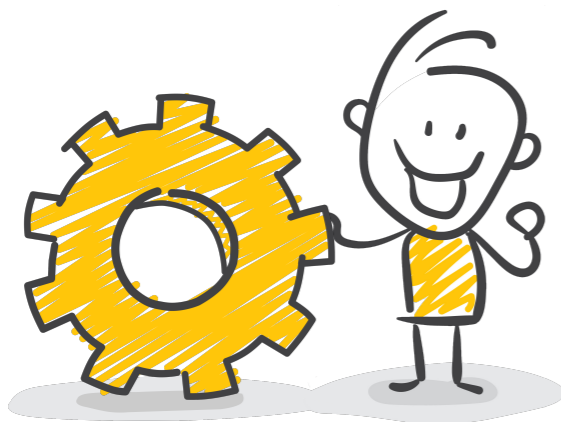
## From Installation to Monitoring to Maintenance



We offer you a carefree package by making our services and systems work together seamlessly from one point of control.

### Installation + Maintenance

- Professional installation in house or certified workshop to prevent manipulation or removal of the systems
- One-time or regular certified trainings for optimal operation of the systems
- Monitoring of your systems - We will inform you immediately of any irregularities or problems
- System testings will be performed on an annual basis
- With a 24/7 Service contract you can reach us 24 hours a day, 7 days a week, 365 days a year



# Application Programming Interface

Tailored to your requirements

## Multi-Access API

We offer you our service to bundle and analyze your data and make it useful for your logistics planning. Experience a high level of security and stability with our compatible and flexible in-house software solutions.



Collect data from your active devices

combine different providers of location systems in one web interface



Analyze and prepare the collected data for transfer

Connect external data processors (AMIC, security partners, etc.) to our security server



Send and/ or receive data to/ from external processors (e.g. transport management systems)





# We are looking forward to your call

SatMARS Navigations- u.  
Kommunikationssysteme GmbH  
Bussardweg 14  
D-41468 Neuss  
Phone: +49-2131-772 397 00  
E-Mail: [info@satmars.de](mailto:info@satmars.de)  
Web: [www.satmars.de](http://www.satmars.de)

Visuals © Adobe Stock & Strichmännchen.de



NAVIGATIONS- & KOMMUNIKATIONSSYSTEME