



## SatLOCK High-Value

### Safety-Level #1

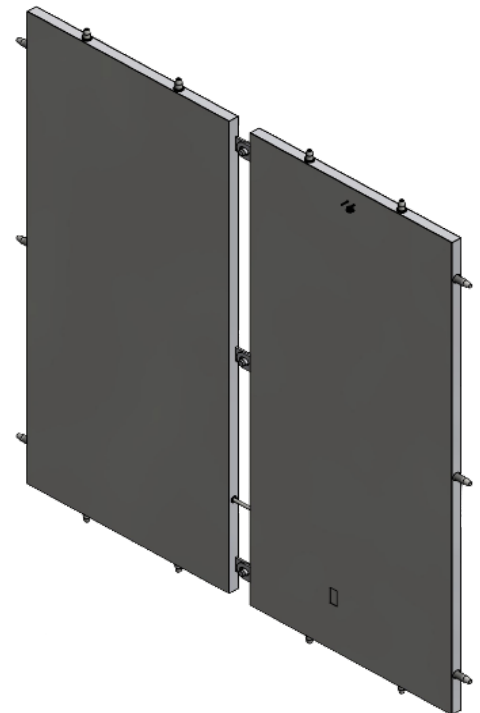
With the *SatLOCK* high-value frame you not only lock the doors of your trailer or trailer, you can also control them remotely. *SatLOCK* High-Value is specially designed for use in the transport of high- quality goods. Particularly in the area of pharmaceutical transports or even tobacco products, high protection against theft by the customer and the insurance companies is often required.

The solution *SatLOCK* High-Value is specially adapted to this area and meets safety standards such as TAPA-TSR-1 or even higher certificates such as BAT-V1. The Safety-Level # 1 version offers the highest level of safety, but also enables a very quick and cost-effective installation.

The solution not only consists of the *SatLOCK* interlock and *SatMOS*® remote monitoring, but also mechanical frame constructions increase protection against burglary. This will be supplemented by the solution with sensors from the *SatSENS* family, which will enable indoor and environmental monitoring.

### Highlights at a glance

- Plug'n'Safe solution - All peripherals pre-installed for quick and easy installation
- Special mechanical frame construction for optimal burglary protection
- Certified solution, compatible with TAPA TSR-1, BAT-V1, etc.
- Thrust and stroke length and position adjustable for optimal installation and application compatibility
- Loop cable inside the frame for detection of intrusion attempt through the door
- Mechanical locking of the frame on the driver's side with closing block of the right door if left not properly locked
- Unlocked by an automatically changing code via keyboard or remotely by remote communication
- Special emergency opening allows unlocking by programmable control
- Partial internal switching and procedure logic allows autonomous response to sensors



### Technical Data

- Operating temperature: -40°C to +80°C
- Power input: operating max. 50W/ standby approx. 1W/ Internal Backup-Battery for about 4 days
- Thrust of motor: up to 500N
- Depth/ thickness of the frame: 54 mm
- Height: 2470 mm, fitting of inner height of 2,60 m to 2,75 m
- Weight: about 70 kg per door
- Locking bolts: 3 bolts per door, rigid, 80 mm length, 30 mm diameter  
4 bolts per door, movable, 100 mm length, 30 mm diameter

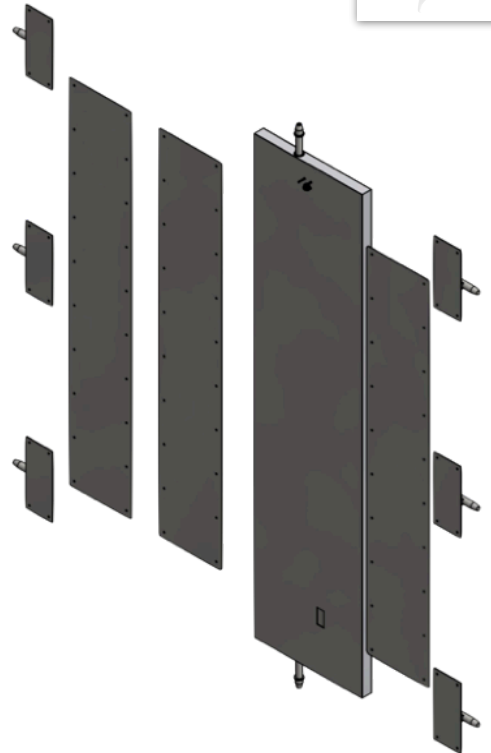


## SatLOCK High-Value

### Safety-Level #2

With the SatLOCK high-value frame you not only lock the doors of your trailer or trailer, you can also control them remotely. SatLOCK High-Value is specially designed for use in the transport of high-quality goods. Particularly in the area of pharmaceutical transports or even tobacco products, high protection against theft by the customer and the insurance companies is often required.

The solution SatLOCK High-Value is specially adapted to this area and meets safety standards such as TAPA-TSR-1 or even higher certificates such as BAT-V1. By constructing the frame into different components (locking unit, door protection plates, bolt units), the requirement and safety in Safety-Level # 2 can be individually adapted.



### Highlights at a glance

- Plug'n'Safe solution - All peripherals pre-installed for quick and easy installation
  - Certified solution, compatible with TAPA TSR-1, BAT-V1, etc.
  - Thrust and stroke length and position adjustable for optimal installation and application compatibility
  - SoftLOCK-Funktion vor dem Erreichen der jeweiligen Endposition
  - Programmierbare Heizung der Elektronikammer in Abhängigkeit zur Umgebungstemperatur
  - Unlocked by an automatically changing code via keyboard or remotely by remote communication
  - Special emergency opening allows unlocking by programmable control
- Partial internal switching and procedure logic allows autonomous response to sensors

### Technical Data

- Operating voltage: 6 - 34 Volt
- Operating temperature: -40°C to +80°C
- Power input: operating max. 50W/ standby approx. 1W/ Internal Backup-Battery for about 4 days
- Thrust of motor: up to 500N
- Depth/ thickness of the frame: 54 mm
- Height of the frame: 2470 mm, fitting of inner trailer height of 2,60 m to 2,75 m
- Locking bolts: 3 bolts per door, rigid, 80 mm length, 30 mm diameter
- 2 bolts on the right door, movable, 100 mm length, 30 mm diameter



## SatLOCK Easy-Safe

All-In-One Cargo Security

*Protection against theft and manipulation?  
Notifiable goods?  
Then this is your solution!*

With SatLOCK Easy-Safe, you not only lock the doors of your trailer.

SatLOCK Easy-Safe also offers the possibility to track your vehicle and remotely control the electronic interlock.

At the same time, SatLOCK Easy-Safe is a simple and cost-effective solution that enables fast installation with optimized safety.

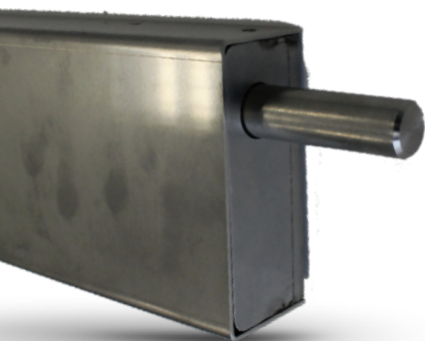
The increased design prevents SatLOCK Easy-Safe not only the spontaneous unauthorized access to the hold of your vehicle but also offers a higher level of security.

Thanks to the integrated SatMOS® positioning system, you also have remote access to the interlock at any time and can open and close it remotely.

In addition to the possibility of distance, the door is opened by the driver via a built-in keypad on the vehicle. The lock automatically locks the doors after they have been loaded as soon as they close.

Due to the remote access, the driver code can now be locked in the keypad in order to lock access through it as well.

### Highlights at a glance



- Plug'n'Safe solution - All peripherals pre-installed for quick and easy installation
- Thrust and stroke length and position adjustable for optimal installation and application compatibility
- SoftLOCK function before reaching the respective end position
- Unlocked by an automatically changing code via keyboard or remotely by remote communication
- Special emergency opening allows unlocking by programmable control
- Remote monitoring and control of locking by SatMOS® positioning system

### Technical Data

- Operating voltage: 6 - 34 Volt
- Operating temperature: -40°C to +80°C
- Power input: operating max. 50W/ standby approx. 1W/ Internal Backup-Battery for about 4 days
- Thrust of motor: up to 500N
- Depth/ thickness of the frame: 54 mm, can be embedded in a 80 mm door
- Locking pin: 1 piece, movable, 200mm length, 25mm diameter

