

Person Security is our Priority

Especially for those who work in hazardous places or work alone.



BEING AN EMPLOYER DURING CORONA CRISIS IS NOT EASY.

The corona crisis has impacted millions of lives around the world, changing how we shop, affecting how we socialize and perhaps most significantly, transforming how we work. Companies who had to keep their staff working at full capacity had to switch to home working or create shift patterns.

As a result many are now working alone from home and in other remote places.

Many companies however were forced to operate only with skeleton crews making security measures and communication chains an issue. Out of sight or earshot of their employees and colleagues, workers in any sector, whether in a warehouse or in assembly, who are suddenly working on their own are facing the risk of incapacitation or injury, due to slips, trips or falls.



NOW MORE THAN EVER, WE'RE RELIANT ON THE TRANSPORT SECTOR.

The rise of internet retail businesses has prompted a corresponding increase in logistics and supply chain roles. Transport companies and their drivers are now among the key groups who keep the country going. Most employees in various roles in the sector are frequently working alone or remotely, often facing violence and physical assault or robbery.

That means appropriate measures must be taken to ensure their safety.



Lone Worker

No matter where you work - office or warehouse. Accidents could pass unnoticed when you are on your own.



Localisation

To know where your employees are could save their lives.

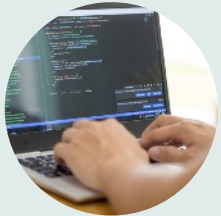


Emergency Call

In emergency situations a security device will help to trigger an alarm.

DO YOU RECOGNIZE POTENTIAL HAZARD IN YOUR COMPANY?

We are here to support you and your employees, whose roles have become so important to the economy. Using worker location tracking systems for your lone and remote employees can make world of difference for both their safety as well as your peace of mind. If a lone worker ever experiences an emergency and needs help, knowing their location will allow you to send the best help possible, as quickly as possible.



Service

We're there for you 24 hours a day, 365 days a year.



Consultation

We would be pleased to advise you and offer you a tailor-made solution.



More

Find out more about our product range on www.satmars.de

SatFONE.smart

Our compact and discrete SOS button for lone workers. It deploys two key technologies. Global Positioning System (GPS) to locate your lone worker in an emergency.

And Global System for Mobile Communications (GSM), which allows workers to speak directly to the security center in the case of an emergency.



MAN DOWN FEATURE

The Man-Down feature uses in-built motion sensor technology to detect sudden impacts or changes in the handset's orientation, sending an automatic alarm to the security center when falling or fainting..

MANUAL SOS BUTTON

For more active danger, workers can always themselves trigger an alarm if they feel to be in danger.

HorizonGO

Security is a critical element of cargo supply with diver's risks and challenges involved. We will help you achieve optimal supply chain protection. With our partner Melton Technologies, Inc. we offer you a powerful, cost effective dispatch and driver communication solution.

Using the new monitoring portal HorizonSuite you can actively monitor your vehicles and drivers anywhere in the supply chain.



The HorizonGO app will allow your driver to stay connected with you or his colleagues at any time. The ability to contact you whenever she or he experiences an emergency and needs help, will give you the opportunity to react immediately and send the best possible help.

Find out more about the numerous features of HorizonGO.

To learn more, please visit www.meltontechnologies.com